

## Common Mode Choke ~ CMT2010MB SERIES

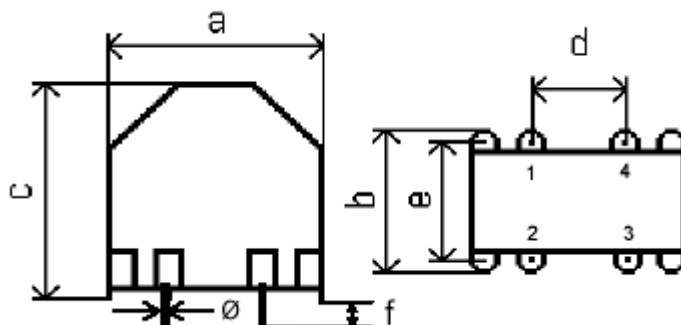


### PART NUMBERING SYSTEM

<b>CMT</b>	<b>2010MB</b>	—	<b>103N</b>	—	<b>LF</b>
TYPE	DIMENSIONS		IMPEDANCE		LEAD FREE

### SHAPES AND DIMENSIONS

UNIT : mm



a=26.5 Max. b=18.5 Max. c=30.5 Max. d= 12.5±0.2 e= 15.0±0.2 f= 3.0±0.5 ψ= 0.6x0.6typ.

### SCHEMATIC DRAWING



### FEATURES

- Highest common mode **impedance** over the **widest frequency range** .
- Wide inductance range
- Inductance values up to **50 mH**
- Other inductance values available upon request
- **RoHS-compliant**. Tin-silver over copper terminations.



## Common Mode Choke ~ CMT2010MB SERIES



### FEATURES

- Highest common mode **impedance** over the **widest frequency range**.
- **1250 Vrms**, one minute isolation between windings.
- Inductance values up to **50 mH**; current ratings as high as **6 Amps**.
- **RoHS-compliant**. Tin-silver over copper terminations.

### SPECIFICATION TABLE

PART NUMBER	INDUCTANCE (mH)	DCR (Ω) (max)	IN ( A ) (max)	Nominal Voltage	TEST FREQ. ( Freq. )
CMT2010MB-182N-LF	1.8±30%	0.023	6.0	250	10KHz/50mV
CMT2010MB-272N-LF	2.7±30%	0.060	3.0	250	10KHz/50mV
CMT2010MB-402N-LF	4.0±30%	0.070	3.0	250	10KHz/50mV
CMT2010MB-682N-LF	6.8±30%	0.160	1.9	250	10KHz/50mV
CMT2010MB-103N-LF	10±30%	0.180	1.9	250	10KHz/50mV
CMT2010MB-273N-LF	27±30%	0.640	1.0	250	10KHz/50mV
CMT2010MB-333N-LF	33±30%	0.850	0.8	250	10KHz/50mV
CMT2010MB-503N-LF	50±30%	1.200	0.6	250	10KHz/50mV

- Inductance is measured with a LCR meter 4284A or equivalent.
- Operating temperature range -25°C to +125°C
- Electrical specifications at 25°C